

Batch Drawing Template Change Training

Batch Drawing Template Change_Training.zip



Batch Drawing Template Change - Overview

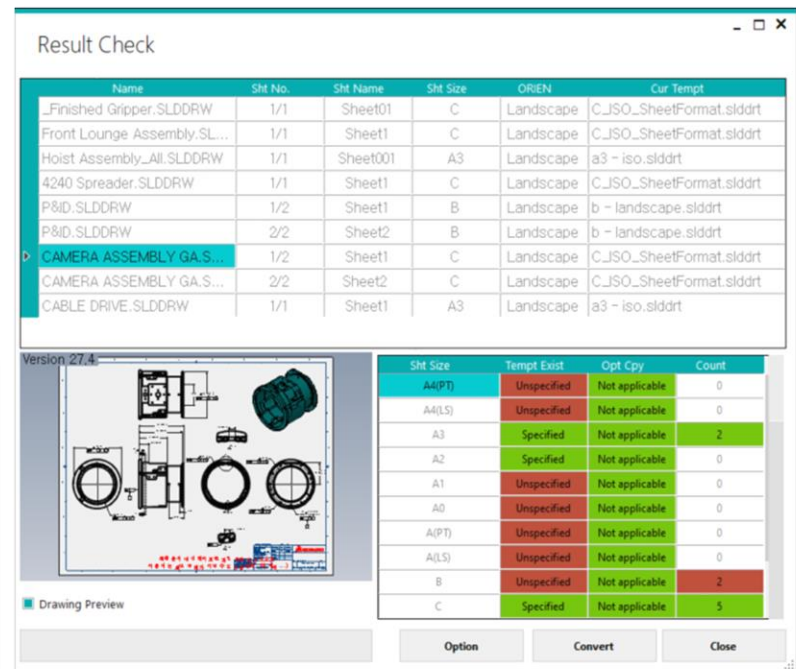
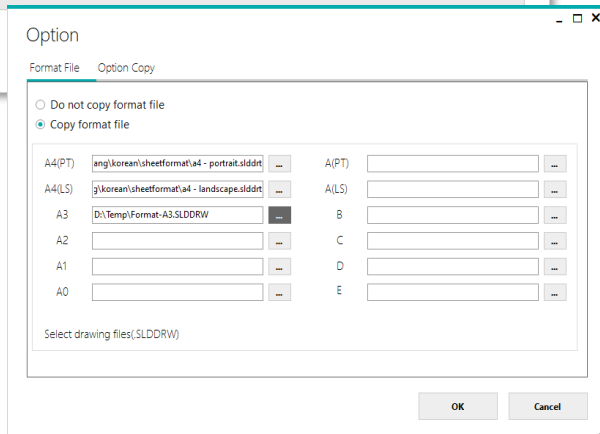
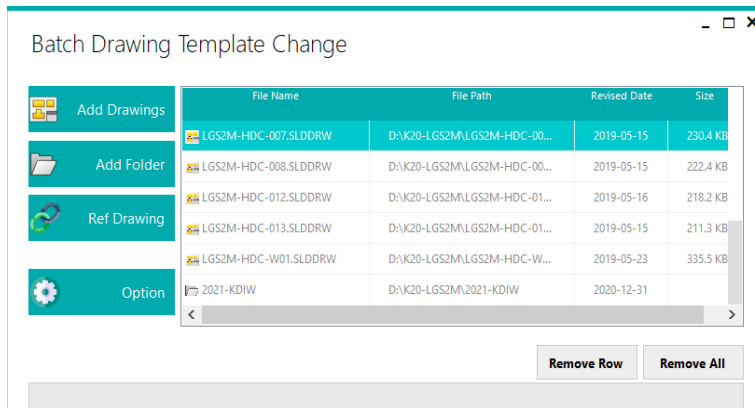
Main Functions

- Convert the template for the drawing file at the same time
- Copy settings used in other drawings
- Validation of drawing template before converting it

Benefits

- Provide a consistent design for a drawing
- Increase the reusability of existing drawing
- Reduce the works associated with changing the drawing

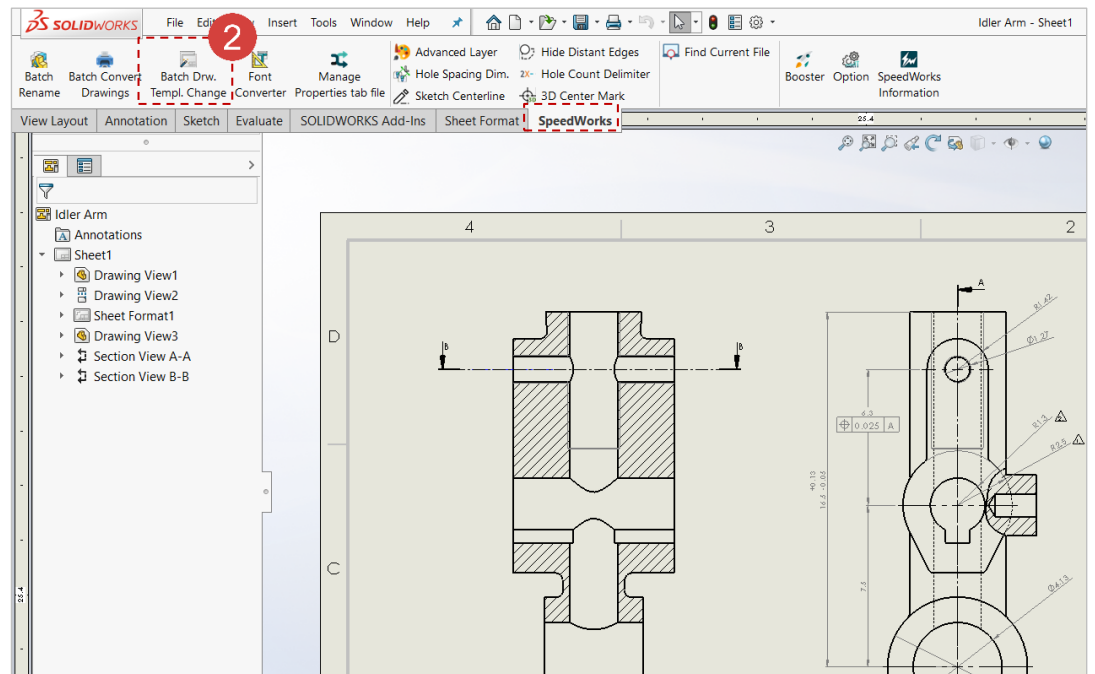
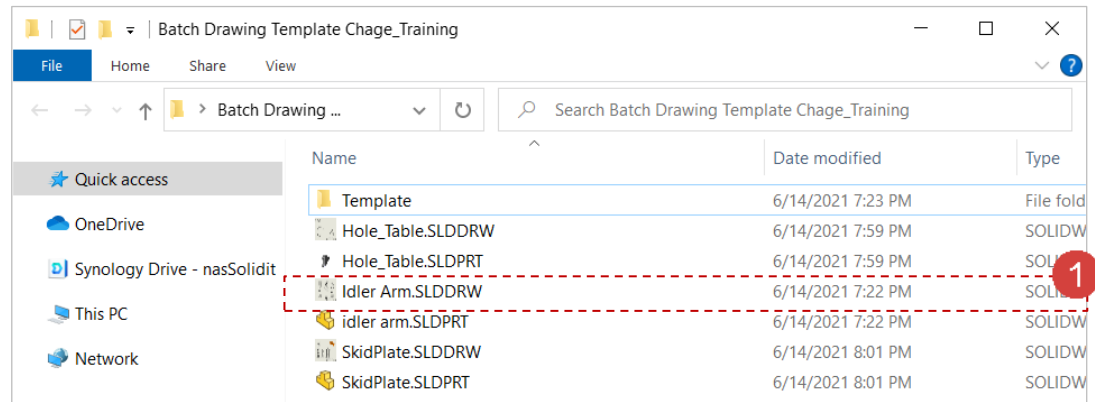
Course Objective: Follow instructions through the course and learn how to use Batch Drawing Template Change.



Batch Drawing Template Change - Execute

Work on the part with the red circle (1) following instructions by yourself.
The part with the black square (1) is an additional explanation or a reference.

- 1 Double-click to run **Idler Arm.SLDDRW**.
- 2 Click **[SpeedWorks]** tab – **[Batch Drawing Template Change]** button.

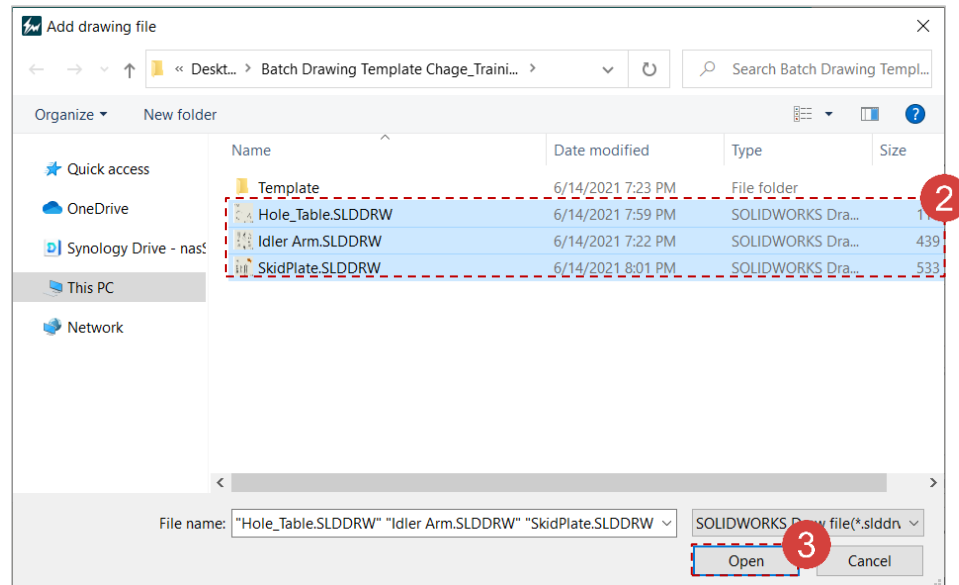
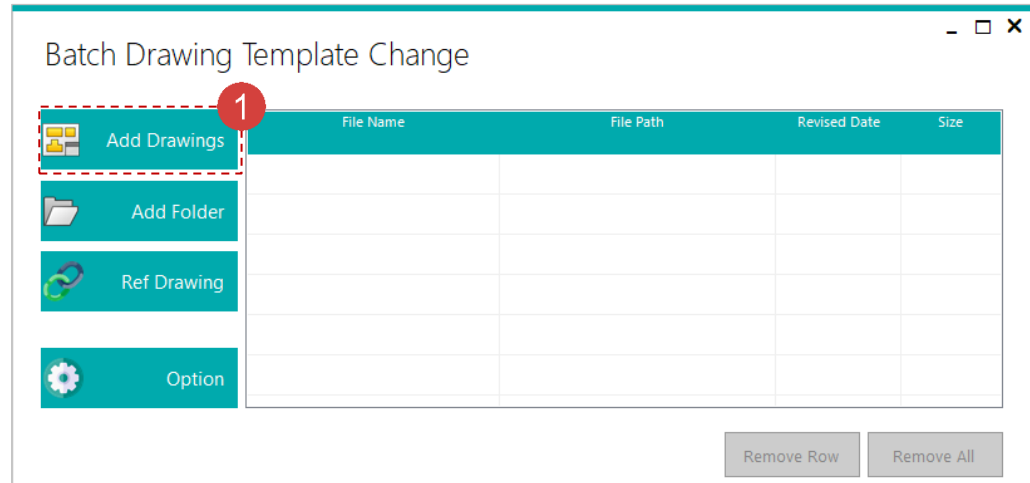


※ You can download example files at Support > Archives
(http://www.solidit.co.kr/dataroom_en)

Batch Drawing Template Change - Add Drawings

Work on the part with the red circle (1) following instructions by yourself.
The part with the black square (1) is an additional explanation or a reference.

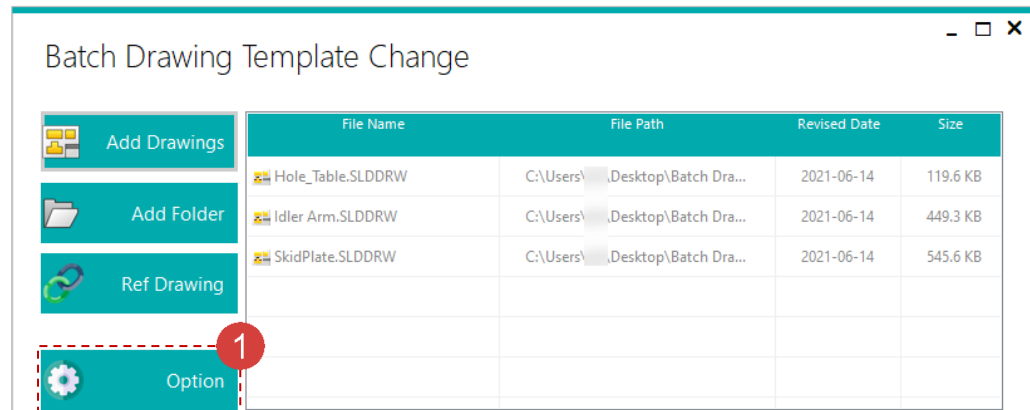
- 1 Click **[Add Drawings]** button.
- 2 Select drawing files in the training folder
(**Hole_Table.SLDDRW**, **Idler Arm.SLDDRW**,
SkidPlate.SLDDRW).
- 3 Click **[Open]** button to add into target list.



Batch Drawing Template Change - Option

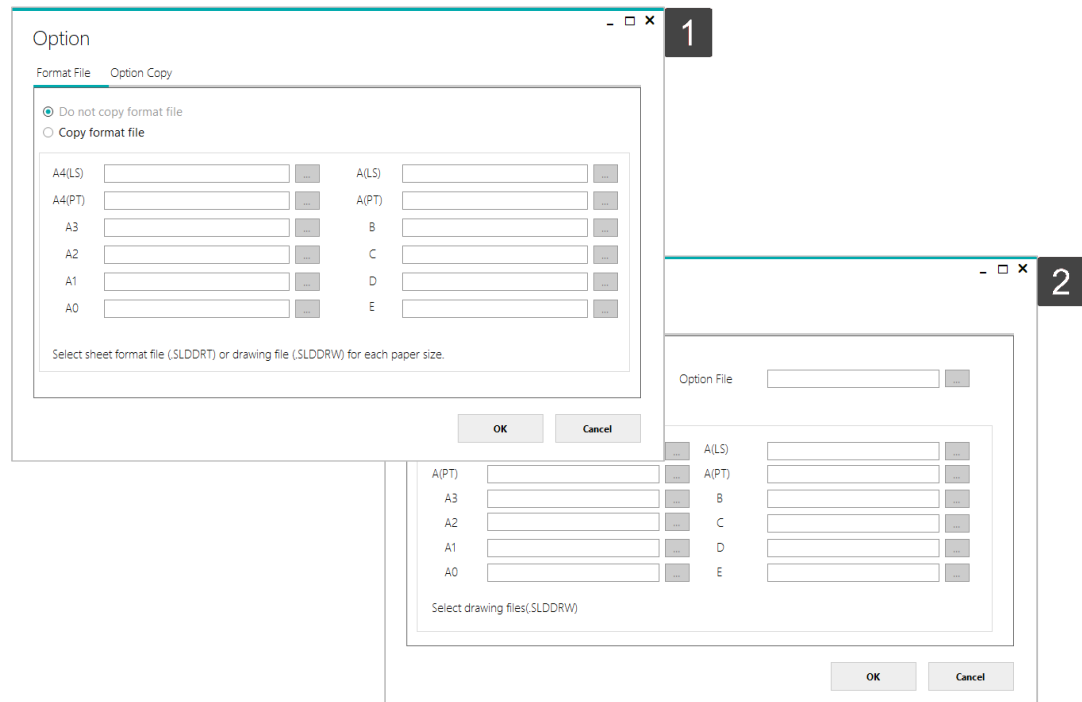
Work on the part with the red circle (1) following instructions by yourself.
The part with the black square (2) is an additional explanation or a reference.

1 Click the **[Option]** button to set format file and copy options.



1 **[Format File]tab:** Users can specify the file for sheet format with respect to each sheet size. Select (.SLDDRT) file or select a drawing with a sheet format file is applied.

2 **[Option Copy]tab:** Users can copy the document setting applied to the drawing file and apply to other files. Although the size of sheet is different, all sheets will be applied to identical option. Furthermore, it is possible that users can specify different option to each sheet.

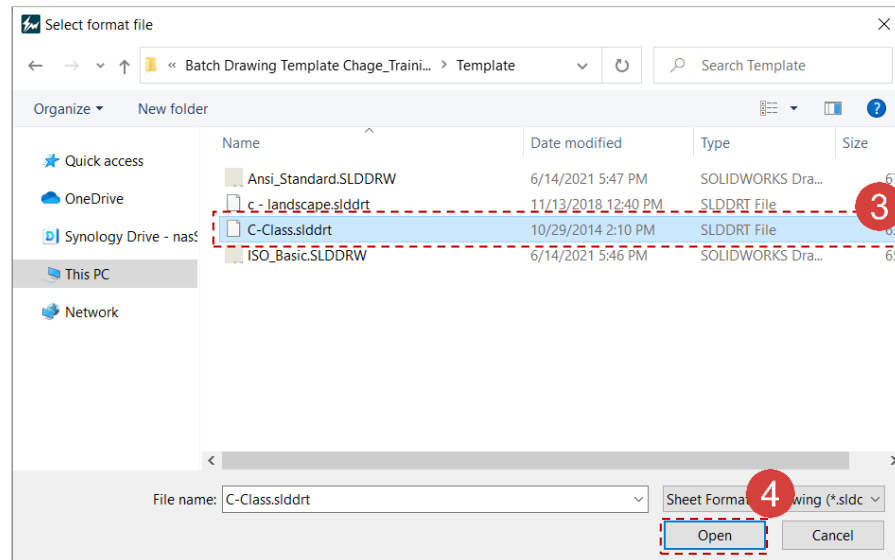
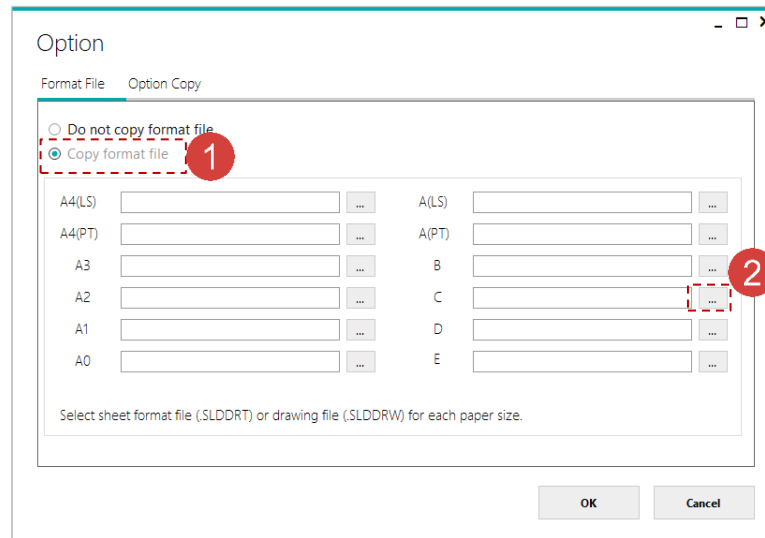


Batch Drawing Template Change - Set Sheet Format

Work on the part with the red circle (1) following instructions by yourself.
The part with the black square (1) is an additional explanation or a reference.

- 1 Check the [Copy format file].
- 2 Add sheet format file of C size by click [...] button of C size.
- 3 Select 'Template/C-Class.slddrt' file.
- 4 Click [Open] button to add file.

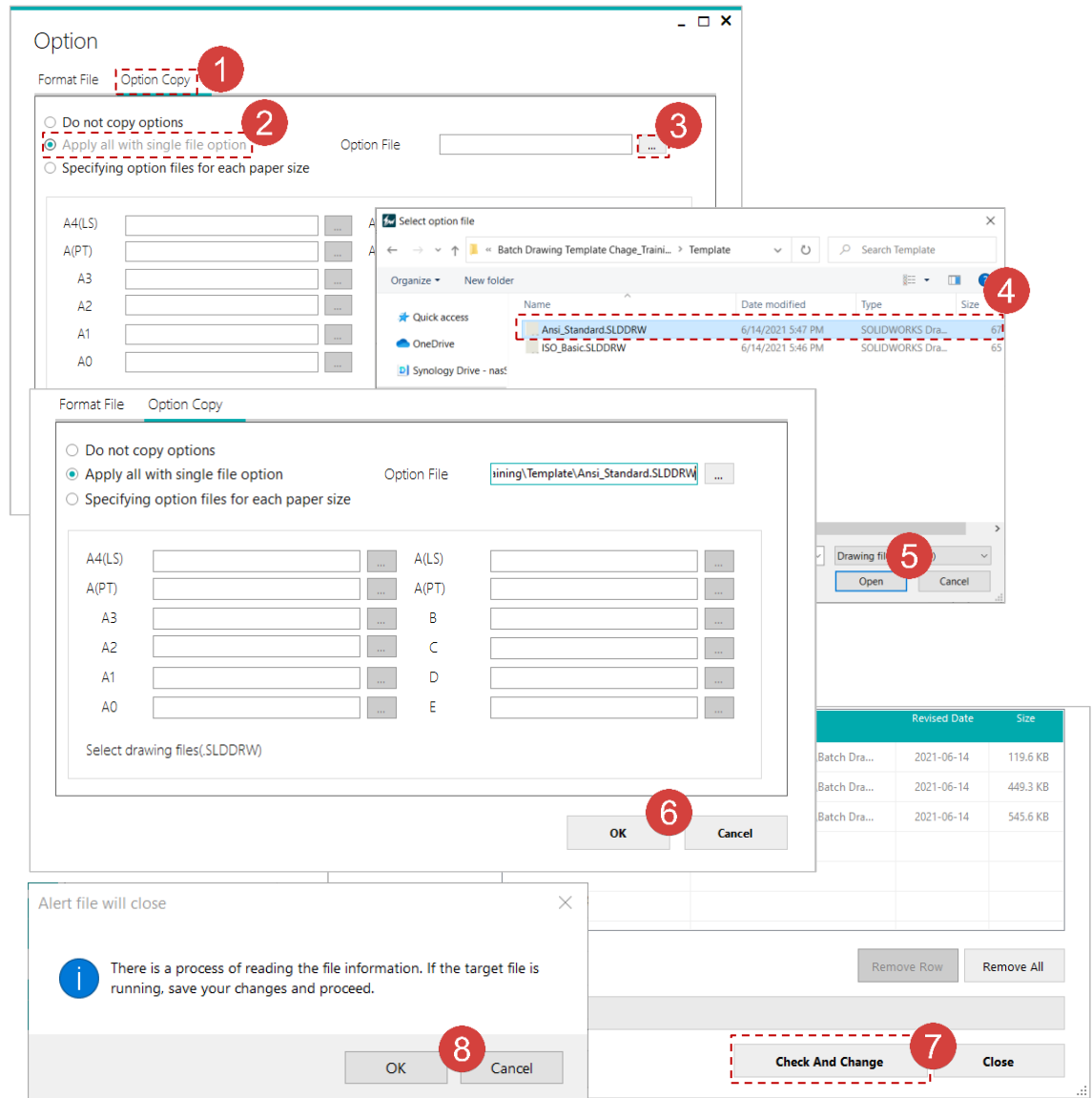
In these process, The conversion time is much faster when users use a Sheet Format file(.SLDDRT) than a drawing file (.SLDDRW).



Batch Drawing Template Change - Set Option File

Work on the part with the red circle (1) following instructions by yourself.
The part with the black square (1) is an additional explanation or a reference.

- 1 Click [Option Copy] tab.
- 2 Check the [Apply all with single file option].
- 3 Click [...] button to specify drawing files that copy settings from.
- 4 Select **Template/Ansi_Standard.SLDDRW** file.
- 5 Click the [Open] button to specify file.
- 6 Click the [OK] button to close option window.
- 7 Click the [Check And Change] button to proceed process.
- 8 If target file is already running, following notice window will pop-up. Save changed and click [OK] to proceed.



Batch Drawing Template Change - Conversion

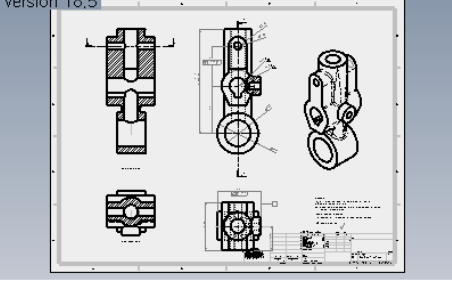
Work on the part with the red circle (1) following instructions by yourself.
The part with the black square (1) is an additional explanation or a reference.

- 1 [Drawing Preview] provides users to check a drawings.
- 2 Check the results against specific formats and options defined in previous steps.
- 3 Click the [Convert] button.
- 4 When the conversion is complete, a notification window will be displayed. Click the [OK] button to close the window.

💡 If sheet format or copy option files are not specified, Corresponding [Count] cell turns into red.

- 1 The result of conversion.
- 2 The options before convert drawing.

Version 18.5



Drawing Preview 1

Sheet Size	Templ Exist	Opt Cpy	Count
A4	Unspecified	Common option	0
A4(PT)	Unspecified	Common option	0
A3	Unspecified	Common option	0
A2	Unspecified	Common option	0
A1	Unspecified	Common option	0
A0	Unspecified	Common option	0
A	Unspecified	Common option	0
A(PT)	Unspecified	Common option	0
B	Unspecified	Common option	0
C	Specified	Common option	4

Option Convert Close 3

Convert Completed

Successfully changed all templates.

OK 4

2

Document Properties - Drafting Standard

System Options Document Properties

Drafting Standard

- Annotations
- Borders
- Dimensions
- Centerlines/Center Marks
- DimXpert
- Tables
- Views
- Virtual Sharps
- Detailing
- Drawing Sheets
- Grid/Snap
- Units
- Line Font
- Line Style
- Line Thickness
- Image Quality
- Sheet Metal
- Weldments

Overall drafting standard

ISO-MODIFIED

Derived from: ISO

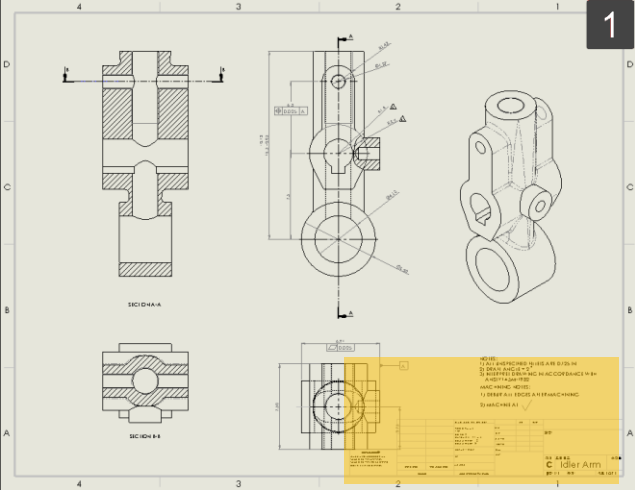
Uppercase

☐ All uppercase for notes

☐ All uppercase for tables

Exclusion list

m;mm;cm;km;um;µm;nm;s;Hz;Pa;



1

Batch Drawing Template Change - Output

Work on the part with the red circle (1) following instructions by yourself.
The part with the black square (1) is an additional explanation or a reference.

1 When the conversion is complete, all windows are closed. Open the **Idler Arm.SLDDRW** file to check the difference.

1 The result after conversion. A logo has been added to the **[Title section]**.

2 Option status after drawing conversion. Drafting standard is changed from ISO standard to 'ANSI-Modified'.

